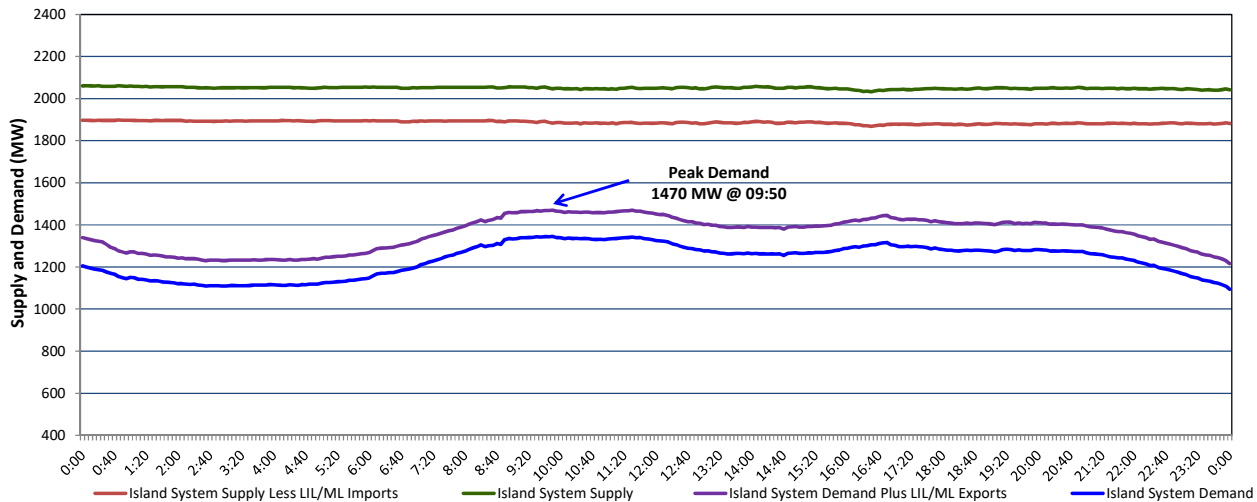


**Newfoundland Labrador Hydro (NLH)  
Supply and Demand Status Report Filed Wednesday, December 29, 2021**

**Section 1  
Island Interconnected System Supply, Demand & Exports  
Actual 24 Hour System Performance For Saturday, December 25, 2021**



**Supply Notes For December 25, 2021**

1,2

A As of 0830 hours, November 12, 2021, Holyrood Unit 2 unavailable (170 MW).

**Section 2  
Island Interconnected Supply and Demand**

Sun, Dec 26, 2021	Island System Outlook <sup>3</sup>		Seven-Day Forecast	Temperature (°C)		Island System Daily Peak Demand (MW)		
				Morning	Evening	Forecast	Adjusted <sup>7</sup>	
Available Island System Supply: <sup>5</sup>	2,026	MW	Sunday, December 26, 2021	-2	0	1,485	1,380	
NLH Island Generation: <sup>4,8</sup>	1,525	MW	Monday, December 27, 2021	0	1	1,490	1,385	
NLH Island Power Purchases: <sup>6</sup>	120	MW	Tuesday, December 28, 2021	1	-1	1,550	1,444	
Other Island Generation:	225	MW	Wednesday, December 29, 2021	0	-1	1,570	1,464	
ML/LIL Imports:	156	MW	Thursday, December 30, 2021	0	-1	1,370	1,266	
Current St. John's Temperature & Windchill:	-3	-10	°C	Friday, December 31, 2021	-1	-2	1,355	1,251
7-Day Island Peak Demand Forecast:	1,570	MW	Saturday, January 1, 2022	-1	-3	1,345	1,241	

**Supply Notes For December 26, 2021**

3

- Notes:
1. Generation outages for running and corrective maintenance are included. These are not unusual for power system operations. They generally do not impact customer supply. The power system operators schedule outages to system equipment whenever possible to coincide with periods when customer demands are low and sufficient supply reserves are available. However, from time to time equipment outages are necessary and reserves may be impacted.
  2. Due to the Island system having no synchronous connections to the larger North American grid, when there is a sudden loss of large generating units there may be a requirement for some customer's load to be interrupted for short periods to bring generation output equal to customer demand. This automatic action of power system protection, referred to as under frequency load shedding (UFLS), is necessary to ensure the integrity and reliability of system equipment. Under frequency events have typically occurred 5 to 8 times per year on the Island Interconnected System and the resultant customer load interruptions are generally less than 30 minutes. With the activation of the Maritime Link frequency controller during the winter of 2018, UFLS events have occurred less frequently.
  3. As of 0800 Hours.
  4. Gross output including station service at Holyrood (24.5 MW) and improved NLH hydraulic output due to water levels (35 MW).
  5. Gross output from all Island sources (including Note 4).
  6. NLH Island Power Purchases include: CBPP Co-Gen, Nalcor Exploits, Rattle Brook, Star Lake, Wind Generation and capacity assistance (when applicable).
  7. Adjusted for curtailable load, market activities and the impact of voltage reduction when applicable.
  8. Due to limitations inherent in the design of combustion turbines, the output of combustion turbines may be reduced in the event that ambient temperatures exceed the threshold

**Section 3  
Island Peak Demand Information  
Previous Day Actual Peak and Current Day Forecast Peak**

Sat, Dec 25, 2021	Actual Island Peak Demand <sup>9</sup>	9:50	1,470 MW
Sun, Dec 26, 2021	Forecast Island Peak Demand		1,485 MW

Notes: 9. Island Demand / LIL / ML Exports (where applicable) is supplied by NLH generation and purchases, plus generation owned and operated by Newfoundland Power and Corner Brook Pulp & Paper (Deer Lake Power, DLP).